

EU08/11

Unemployment in Tyne & Wear: October 2008

Published: November 2008

In Tyne & Wear in October 2008 the main features were:

- 25,659 people, 5.4% of the labour force, claimed unemployment benefits (Table 2).
- Claimant unemployment count statistics for current (2004) wards are provided in Appendix 1.
- In the month to October, **the unadjusted claimant count rose in Tyne & Wear (717, 2.8%), regionally by +3.7%, and in the UK by +2.7%** (Table 2). The claimant count rose in all five Tyne & Wear Districts. The fastest rise was in North Tyneside (+128, 3.2%) and the slowest in Newcastle (+156, 2.5%).
- **In the UK, the claimant count has risen for the ninth consecutive month since January, up 36,500 in October (up 3.9%) (the biggest monthly rise for about 16 years).** The UK claimant count rose by 32,500 in August and 31,800 in September. Compared to a year ago, the UK seasonally adjusted claimant count is 154,800 higher (up 18.7%). The UK seasonally adjusted claimant count rate is 3.0% (Table 1).
- **The claimant count, compared to a year ago, is higher locally, regionally and in the UK.** Compared to a year ago, the claimant count is +21.1% (+4,471) higher in Tyne & Wear, +24.9% higher in the North East and +21.1% higher in the UK. At Tyne & Wear district level, the claimant count is over 16% higher in all five districts compared to a year ago. The fastest rise was in Gateshead (+803, +24.9) and the slowest in Newcastle (+912, +16.5%). (Table 2).
- **The North East seasonally adjusted claimant count rose 2,300 to 58,600 in October, up 10,600 over the year** (Table 1). The North East has the highest regional rate in the UK (4.8%). The South East and South West had the lowest regional rate (1.9%). The claimant count rate in the month to October increased in the North East and Yorkshire and the Humber by +0.2 percentage points(pp), and all other Government Office regional rates increased by +0.1pp. (All seasonally adjusted).

Note: seasonally adjusted claimant count data in this broadsheet are provisional and are revised by ONS the following month.

Labour Force Survey (LFS) Estimates

Labour Force Survey (LFS) estimates, particularly for the North East and Tyne & Wear, are subject to sampling variability*. The following therefore gives the *probable* direction of change. Over the year to September 2008, in the North East the LFS indicates that the trend in the employment rate is down, -1.7 pp on the year at 70.4%. The North East unemployment rate in the quarter to September 2008 was 8.0%, up 1.8 pp on a year earlier [This is not significantly different].

In the UK the LFS shows a fall in the number of people in employment (down 99,000 over the quarter to September) and the employment rate down (74.4%, down 0.4 pp). The number of workforce jobs in the UK, however, was up in June 2008 by 142,000 on a year earlier [This is about half the ¼ m pa or so growth typically seen in the 15 years to 2007 – Ed]. (The sector with the largest annual increase was education, health and public administration, up 43,000). The UK unemployment rate in the 3 months to September 2008 was 5.8%, up 0.5 percentage points from a year earlier. This is significantly different from a year ago.

(*95% of estimates of UK rates will be within +/-0.2 percentage points of the actual unemployment rate and in the North East about +/-1.3 percentage points of the actual rate).

12-month averages from the Annual Population Survey (APS) give more robust unemployment rates. **In Tyne & Wear for the 12 months to December 2007, estimated ILO unemployment was 32,800 or 6.4% (unadjusted)** (Table 5).

CLAIMANT COUNT UNEMPLOYMENT

The claimant count reports numbers qualifying for benefits as a result of unemployment and is subject to the associated administrative system.

Table 1: Change in Total Claimant Count: Seasonally Adjusted*: October 2008

| | (Workforce rates)[#] | | Change since previous: | | | |
|--------------------------|--------------------------------------|---------------|-------------------------------|----------|-------------|----------|
| | Total | Rate % | Month | % | Year | % |
| North East Region | 58,600 | 4.8 (w) | 2,300 | 4.1 | 10,600 | 22.1 |
| Great Britain | 950,600 | 3.0 (w) | 35,400 | 3.9 | 148,000 | 18.4 |
| United Kingdom | 980,900 | 3.0 (w) | 36,500 | 3.9 | 154,800 | 18.7 |

Source: Office for National Statistics

Notes: * The seasonally adjusted series takes account of previous changes which have affected the unemployment count so that the whole series over time is consistent with current figures. Seasonally adjusted figures are not available below regional level. Claimants aged under 18 are excluded. Figures in this table are provisional.

The national and regional claimant count rates in Table 1 are the number of unemployed as a percentage of the estimated total workforce (the sum of unemployed claimants, employees in employment, self-employed, HM Forces and participants on work-related government training programmes), at mid-2006.

In January 2003, the Office for National Statistics (ONS) withdrew workforce-based claimant count rates for sub-regional areas, however, they remain available for regions and countries. The workforce-based rates, below regions, were replaced with a new residence-based measure. The claimant count, as a 'proportion' of the resident population of working age (PWA is females 16-59, males 16-64), are given in Table 3 and are named 'claimant count proportions'. TWRI's residence-based rates (which use the economically active as the denominator) are given in Table 2 (overleaf).

Table 2: National, Regional and Local Claimant Count* and Change, Unadjusted: October 2008

| | Male | Rate% | Female | Rate% | Total | Rate% | Change since previous month: | | Change since previous year: | |
|------------------------|---------|-------|---------|-------|---------|-------|------------------------------|-----|-----------------------------|------|
| | | | | | | | Number | % | Number | % |
| Gateshead | 3,004 | 6.6 R | 1,020 | 2.6 R | 4,024 | 4.7 R | 118 | 3.0 | 803 | 24.9 |
| Newcastle | 4,898 | 8.2 R | 1,543 | 3.0 R | 6,441 | 5.8 R | 156 | 2.5 | 912 | 16.5 |
| North Tyneside | 3,052 | 6.4 R | 1,023 | 2.4 R | 4,075 | 4.5 R | 128 | 3.2 | 789 | 24.0 |
| South Tyneside | 3,264 | 9.0 R | 1,225 | 4.1 R | 4,489 | 6.8 R | 118 | 2.7 | 844 | 23.2 |
| Sunderland | 4,939 | 7.3 R | 1,691 | 2.9 R | 6,630 | 5.3 R | 197 | 3.1 | 1,123 | 20.4 |
| Tyne & Wear | 19,157 | 7.5 R | 6,502 | 2.9 R | 25,659 | 5.4 R | 717 | 2.8 | 4,471 | 21.1 |
| North East | 42,942 | 6.5 W | 14,399 | 2.5 W | 57,341 | 4.6 W | 2,041 | 3.7 | 11,447 | 24.9 |
| Great Britain | 684,845 | 4.1 W | 255,055 | 1.7 W | 939,900 | 3.0 W | 24,969 | 2.7 | 161,843 | 20.8 |
| United Kingdom | 708,290 | 4.1 W | 261,989 | 1.7 W | 970,279 | 3.0 W | 25,563 | 2.7 | 169,320 | 21.1 |

Source: Office for National Statistics, Tyne & Wear Research and Information

Notes: * Count of claimants of Jobseekers' Allowance

R = Residence-based. District and county claimant count rates are the number of unemployed now as a percentage of the estimates labour force (the economically active population), at 2001 Census © Crown Copyright.

W = Workforce-based. National and claimant count rates are the number of unemployed as a percentage of the estimated total workforce (the sum of unemployed claimants, employees in employment, self-employed, HM Forces and participants on work-related government training programmes), at mid-2006.

Caution: District and Tyne & Wear numbers in Table 2 are calculated using current (2004) wards. These numbers may vary slightly from figures extracted direct from NOMISWEB, which are based on 1991 wards and are no longer in complete alignment with current Tyne & Wear boundaries.

Table 3: National, Regional and Local Claimant Count*, Unadjusted: October 2008

(Resident PWA-based proportions)

| | Male | Percentage of population # | Female | Percentage of population # | Total | Percentage of population # |
|--------------------------|---------|----------------------------------|---------|----------------------------------|---------|-------------------------------|
| Gateshead | 3,004 | 5.0 | 1,020 | 1.8 | 4,024 | 3.5 |
| Newcastle | 4,898 | 5.7 | 1,543 | 1.9 | 6,441 | 3.8 |
| North Tyneside | 3,052 | 5.2 | 1,023 | 1.8 | 4,075 | 3.5 |
| South Tyneside | 3,264 | 7.0 | 1,225 | 2.8 | 4,489 | 5.0 |
| Sunderland | 4,939 | 5.4 | 1,691 | 2.0 | 6,630 | 3.8 |
| Tyne & Wear | 19,157 | 5.6 | 6,502 | 2.0 | 25,659 | 3.9 |
| North East Region | 42,942 | 5.2 | 14,399 | 1.9 | 57,341 | 3.6 |
| Great Britain | 684,845 | 3.6 | 255,055 | 1.5 | 939,900 | 2.6 |
| United Kingdom | 708,290 | 3.6 | 261,989 | 1.4 | 970,279 | 2.6 |

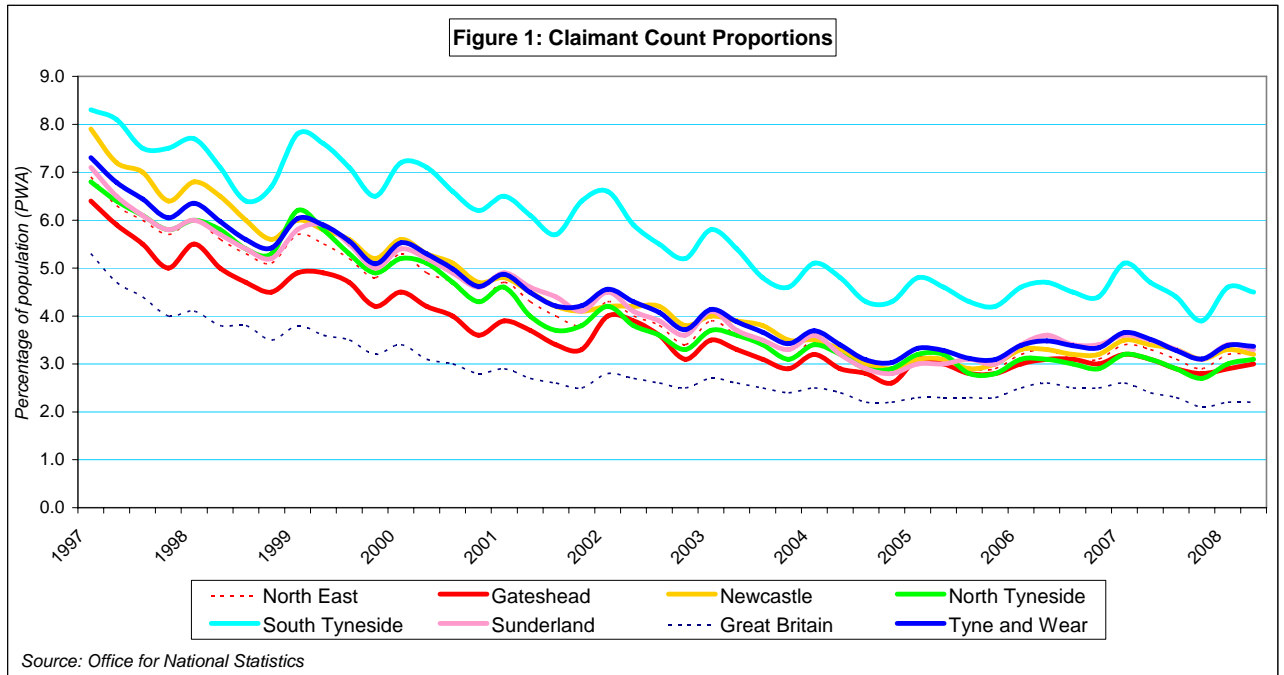
Source: Office for National Statistics, Tyne & Wear Research and Information

Notes: * Count of claimants of Jobseekers' Allowance

District and Tyne & Wear numbers in Table 3 are calculated using current (2004) wards. These numbers may vary slightly from figures extracted direct from NOMISWEB, which are based on 1991 wards.

Claimant count figures given in Table 3 are expressed as a proportion of the resident population of working age (females 16-59, males 16-64). In order to ensure consistency with District and Tyne & Wear boundaries, the population of working age (PWA) figures are derived from the mid-2001 population estimates (sum of CAS wards population of working age figures).

The percentage figures in Table 3 are referred to as 'proportions' to distinguish them from the workforce-based rates, which are available at region/country level. On average, the 'proportions' are around a fifth smaller than the workforce rates, due to the wider denominators.



Notes: Claimant count proportions (residence-based proportions of Population of Working Age) are given for January, April, July and October.

Caution: Not seasonally adjusted, so shows seasonal rises normally in January.

Table 4: National, Regional and Local Benefit Claimants

| | Incapacity/Severe Disablement Allowance* May 2008 | | | | | | Benefit Claimants - working age client group**May 2008 | | | | | |
|--------------------------|---|-------|-----------|-------|-----------|-------|--|-------|-----------|-------|-----------|-------|
| | % of | | % of | | % of | | % of | | % of | | % of | |
| | Male | PWA # | Female | PWA # | Total | PWA # | Male | PWA # | Female | PWA # | Total | PWA # |
| Gateshead | 4,920 | 8.2 | 2,740 | 4.9 | 7,660 | 6.6 | 11,860 | 19.9 | 10,590 | 18.9 | 22,450 | 19.4 |
| Newcastle | 5,820 | 6.7 | 3,180 | 3.9 | 9,000 | 5.4 | 16,690 | 19.3 | 14,960 | 18.4 | 31,650 | 18.9 |
| North Tyneside | 4,040 | 6.8 | 2,520 | 4.5 | 6,560 | 5.7 | 10,270 | 17.4 | 9,470 | 16.7 | 19,740 | 17.1 |
| South Tyneside | 3,970 | 8.5 | 2,040 | 4.7 | 6,000 | 6.6 | 10,280 | 22.0 | 9,350 | 21.4 | 19,630 | 21.7 |
| Sunderland | 8,230 | 9.1 | 4,800 | 5.6 | 13,020 | 7.4 | 18,790 | 20.7 | 16,740 | 19.5 | 35,530 | 20.1 |
| Tyne & Wear | 26,980 | 7.9 | 15,280 | 4.7 | 42,250 | 6.3 | 67,880 | 19.8 | 61,110 | 18.9 | 128,990 | 19.4 |
| North East Region | 128,720 | 15.5 | 75,950 | 10.0 | 204,670 | 12.9 | 152,890 | 18.4 | 140,940 | 18.5 | 293,830 | 18.5 |
| Great Britain | 1,908,350 | 9.9 | 1,256,470 | 7.1 | 3,164,810 | 8.6 | 2,530,560 | 13.2 | 2,593,540 | 14.7 | 5,124,110 | 13.9 |

Source: Department for Work and Pensions

Notes: The data are based on 100% of claims so are not subject to any sampling error. Figures are rounded to the nearest 10, and those below 5 are suppressed as statistically unreliable..

Data relate to a single point in time and provide a snapshot of claims at that point. Data are not seasonally adjusted.

* Count of those in receipt of Incapacity Benefit or Severe Disablement Allowance, aged 16-64, for all durations.

** Benefit claimants – working age client group includes benefit claimants aged 16-64 years, on Income Support (IS) only, Job Seekers Allowance (JSA) only, Incapacity Benefit (IB) only, IS and IB, DLA and IB, DLA, IS and IB, Disability Living Allowance (DLA) only, DLA, IS and SDA, DLA and IS, DLA and SDA, IS and SDA, Severe Disablement Allowance (SDA) only, DLA and JSA, other combinations. Data includes all durations and all family types.

Benefit claimant count figures given in Table 4 are expressed as a proportion of the resident population of working age (females 16-59, males 16-64). In order to ensure consistency with District and Tyne & Wear boundaries, the population of working age (PWA) figures are derived from the mid-2001 population estimates (sum of CAS wards population of working age figures).

INTERNATIONAL LABOUR ORGANISATION (ILO) MEASURE OF UNEMPLOYMENT

The ILO definition of unemployment, refers to people “without a job who were available to start work in the two weeks following their LFS interview and had looked for work in the four weeks prior to interview (or were waiting to take up a job they had already obtained)”. This has been the official, government, definition of unemployment since 1998.

Table 5: National, Regional and Local ILO Unemployment, Unadjusted: 12 months Jan 2007-Dec 2007

| | Male | % | Confidence* | Female | % | Confidence* | Total | % | Confidence* |
|--------------------------|---------|-----|-------------|---------|-----|-------------|-----------|-----|-------------|
| Gateshead | 3,600 | 7.2 | 2.5 | 2,200 | 5.4 | 2.3 | 5,700 | 6.4 | 1.7 |
| Newcastle | 5,000 | 7.4 | 2.5 | 3,800 | 6.5 | 2.5 | 8,800 | 7.0 | 1.8 |
| North Tyneside | 3,300 | 6.4 | 2.5 | 2,500 | 5.5 | 2.4 | 5,800 | 6.0 | 1.7 |
| South Tyneside | 2,500 | 6.7 | 2.5 | 2,000 | 6.3 | 2.5 | 4,500 | 6.5 | 1.7 |
| Sunderland | 5,100 | 7.1 | 2.5 | 3,000 | 4.9 | 2.2 | 8,000 | 6.1 | 1.7 |
| Tyne & Wear | 19,500 | 7.0 | 1.1 | 13,400 | 5.7 | 1.0 | 32,800 | 6.4 | 0.8 |
| North East Region | 45,800 | 7.0 | 0.7 | 30,000 | 5.5 | 0.7 | 75,800 | 6.3 | 0.5 |
| Great Britain | 875,000 | 5.5 | 0.1 | 657,000 | 5.1 | 0.2 | 1,532,000 | 5.3 | 0.1 |

Source: Annual Population Survey, Office for National Statistics.

Notes: Unemployment data from the Annual Population Survey (APS), covering a year's data.

The unemployment rate is the number of unemployed people aged 16 to 59/64 expressed as a percentage of the economically active population aged 16 to 59/64.

*Data are presented with an indication of their reliability, in the form of approximate 95% confidence intervals. For example, an LFS estimate and confidence interval of 6.7% +/-0.7%, means the true rate would expect to lie between 6.0% and 7.4%. Only in exceptional circumstances would the true rate be outside the confidence interval. The narrower the confidence interval, the more reliable the estimate.

APS estimates are rounded to the nearest 100 by ONS. Formerly, ONS' LFS estimates were rounded to the nearest 1,000. The annual Labour Force Survey (LFS) is now incorporated into the Annual Population Survey (APS). Data are published quarterly with each publication covering a year's data. LFS - quarterly: four quarter averages are no longer updated.

Appendix 1: Claimant Count Statistics Current (2004) Wards

October 2008

| Ward | FLOWS | | CLAIMANT UNEMPLOYMENT | | | | | |
|--------------------------------|--------------|--------------|-----------------------|------------|--------------|------------|--------------|------------|
| | onto regr | off regr | Male | %* | Female | %* | Total | %* |
| Birtley | 36 | 27 | 100 | 5.0 | 32 | 1.8 | 132 | 3.5 |
| Blaydon | 49 | 45 | 146 | 6.2 | 55 | 2.7 | 201 | 4.5 |
| Bridges | 88 | 77 | 242 | 14.6 | 79 | 6.5 | 321 | 11.2 |
| Chopwell and Rowlands Gill | 47 | 39 | 142 | 6.6 | 38 | 2.0 | 180 | 4.5 |
| Chowdene | 40 | 38 | 112 | 5.6 | 38 | 2.2 | 150 | 4.0 |
| Crawcrook and Greenside | 39 | 35 | 88 | 3.8 | 22 | 1.1 | 110 | 2.5 |
| Deckham | 80 | 66 | 195 | 9.4 | 63 | 3.6 | 258 | 6.7 |
| Dunston and Teams | 105 | 85 | 259 | 14.6 | 70 | 4.7 | 329 | 10.1 |
| Dunston Hill and Whickham East | 33 | 28 | 81 | 3.6 | 29 | 1.5 | 110 | 2.6 |
| Felling | 70 | 74 | 217 | 12.4 | 88 | 5.9 | 305 | 9.5 |
| High Fell | 76 | 54 | 189 | 10.2 | 64 | 3.8 | 253 | 7.2 |
| Lamesley | 45 | 34 | 105 | 5.5 | 40 | 2.5 | 145 | 4.1 |
| Lobley Hill and Bensham | 66 | 58 | 189 | 8.5 | 67 | 3.5 | 256 | 6.2 |
| Low Fell | 32 | 31 | 63 | 2.7 | 25 | 1.2 | 88 | 2.0 |
| Pelaw and Heworth | 53 | 56 | 117 | 6.1 | 51 | 3.1 | 168 | 4.7 |
| Ryton, Crookhill and Stella | 44 | 33 | 88 | 4.3 | 34 | 1.9 | 122 | 3.1 |
| Saltwell | 64 | 73 | 172 | 8.2 | 60 | 3.4 | 232 | 6.0 |
| Wardley and Leam Lane | 38 | 38 | 91 | 4.4 | 30 | 1.7 | 121 | 3.2 |
| Whickham North | 56 | 45 | 110 | 5.7 | 37 | 2.2 | 147 | 4.1 |
| Whickham South and Sunnyside | 26 | 27 | 58 | 2.4 | 28 | 1.3 | 86 | 1.9 |
| Windy Nook and Whitehills | 62 | 56 | 131 | 5.7 | 43 | 2.2 | 174 | 4.1 |
| Winlaton and High Spen | 45 | 37 | 109 | 5.3 | 27 | 1.5 | 136 | 3.6 |
| GATESHEAD | 1,194 | 1,056 | 3,004 | 6.6 | 1,020 | 2.6 | 4,024 | 4.7 |
| Benwell and Scotswood | 87 | 92 | 291 | 9.9 | 108 | 4.3 | 399 | 7.3 |
| Blakelaw | 71 | 69 | 251 | 10.4 | 75 | 3.5 | 326 | 7.1 |
| Byker | 137 | 112 | 416 | 17.5 | 147 | 7.6 | 563 | 13.0 |
| Castle | 48 | 35 | 94 | 3.4 | 36 | 1.4 | 130 | 2.4 |
| Dene | 33 | 26 | 67 | 2.7 | 25 | 1.1 | 92 | 1.9 |
| Denton | 69 | 46 | 173 | 7.3 | 57 | 2.7 | 230 | 5.1 |
| East Gosforth | 29 | 18 | 57 | 2.5 | 23 | 1.1 | 80 | 1.8 |
| Elswick | 129 | 98 | 475 | 19.6 | 145 | 8.9 | 620 | 15.3 |
| Fawdon | 63 | 57 | 215 | 9.8 | 58 | 2.9 | 273 | 6.6 |
| Fenham | 56 | 53 | 165 | 7.0 | 49 | 2.4 | 214 | 4.9 |
| Kenton | 68 | 54 | 242 | 10.8 | 74 | 3.8 | 316 | 7.5 |
| Lemington | 77 | 53 | 169 | 6.4 | 48 | 2.0 | 217 | 4.2 |
| Newburn | 48 | 38 | 148 | 6.7 | 46 | 2.4 | 194 | 4.7 |
| North Heaton | 45 | 43 | 81 | 3.4 | 31 | 1.5 | 112 | 2.5 |
| North Jesmond | 25 | 33 | 55 | 2.6 | 15 | 0.8 | 70 | 1.7 |
| Ouseburn | 72 | 88 | 184 | 9.8 | 54 | 3.4 | 238 | 6.9 |
| Parklands | 23 | 26 | 52 | 2.7 | 17 | 1.0 | 69 | 1.9 |
| South Heaton | 75 | 80 | 169 | 8.3 | 66 | 3.5 | 235 | 6.0 |
| South Jesmond | 39 | 42 | 86 | 4.2 | 29 | 1.6 | 115 | 3.0 |
| Walker | 135 | 124 | 434 | 19.8 | 112 | 6.4 | 546 | 14.0 |
| Walkergate | 64 | 57 | 216 | 9.3 | 61 | 3.1 | 277 | 6.4 |
| Westerhope | 33 | 25 | 64 | 2.6 | 26 | 1.2 | 90 | 1.9 |
| Westgate | 89 | 72 | 323 | 19.6 | 74 | 5.7 | 397 | 13.5 |
| West Gosforth | 20 | 21 | 52 | 2.1 | 16 | 0.7 | 68 | 1.5 |
| Wingrove | 82 | 82 | 223 | 9.8 | 83 | 4.5 | 306 | 7.4 |
| Woolsington | 64 | 48 | 196 | 8.3 | 68 | 3.3 | 264 | 6.0 |
| NEWCASTLE | 1,681 | 1,492 | 4,898 | 8.2 | 1,543 | 3.0 | 6,441 | 5.8 |

Source: Office for National Statistics, Tyne & Wear Research and Information

Notes: * Rates are the number of unemployed as a percentage of the estimated labour force (the economically active population), at 2001 Census © Crown Copyright

| Ward | FLOWS | | CLAIMANT UNEMPLOYMENT | | | | | |
|-------------------------|--------------|--------------|-----------------------|------------|--------------|------------|--------------|------------|
| | onto | off | Male | %* | Female | %* | Total | %* |
| | regr | regr | | | | | | |
| Battle Hill | 92 | 68 | 172 | 5.7 | 67 | 2.5 | 239 | 4.2 |
| Benton | 36 | 26 | 99 | 4.4 | 36 | 1.7 | 135 | 3.1 |
| Camperdown | 53 | 52 | 150 | 5.5 | 50 | 2.0 | 200 | 3.9 |
| Chirton | 118 | 85 | 356 | 14.1 | 108 | 5.0 | 464 | 9.9 |
| Collingwood | 60 | 71 | 166 | 6.5 | 52 | 2.4 | 218 | 4.6 |
| Cullercoats | 33 | 35 | 69 | 3.2 | 23 | 1.2 | 92 | 2.3 |
| Howdon | 67 | 62 | 269 | 11.4 | 85 | 4.5 | 354 | 8.4 |
| Killingworth | 47 | 47 | 107 | 4.2 | 41 | 1.8 | 148 | 3.1 |
| Longbenton | 66 | 58 | 189 | 9.7 | 56 | 3.3 | 245 | 6.7 |
| Monkseaton North | 31 | 27 | 56 | 2.4 | 16 | 0.7 | 72 | 1.6 |
| Monkseaton South | 48 | 34 | 92 | 4.1 | 32 | 1.5 | 124 | 2.8 |
| Northumberland | 55 | 56 | 120 | 5.3 | 44 | 2.2 | 164 | 3.8 |
| Preston | 48 | 37 | 76 | 3.3 | 28 | 1.4 | 104 | 2.4 |
| Riverside | 116 | 94 | 368 | 15.1 | 102 | 5.1 | 470 | 10.7 |
| St Mary's | 19 | 21 | 38 | 1.8 | 14 | 0.8 | 52 | 1.3 |
| Tynemouth | 47 | 41 | 113 | 4.4 | 49 | 2.2 | 162 | 3.4 |
| Valley | 50 | 44 | 138 | 6.8 | 42 | 2.4 | 180 | 4.8 |
| Wallsend | 71 | 71 | 253 | 9.6 | 84 | 3.7 | 337 | 6.9 |
| Weetslade | 35 | 38 | 104 | 4.4 | 34 | 1.6 | 138 | 3.1 |
| Whitley Bay | 65 | 66 | 117 | 4.8 | 60 | 2.8 | 177 | 3.8 |
| NORTH TYNESIDE | 1,157 | 1,033 | 3,052 | 6.4 | 1,023 | 2.4 | 4,075 | 4.5 |
| Beacon and Bents | 95 | 90 | 329 | 14.6 | 106 | 6.3 | 435 | 11.0 |
| Bede | 67 | 59 | 212 | 12.0 | 65 | 4.5 | 277 | 8.6 |
| Biddick and All Saints | 91 | 59 | 259 | 14.5 | 119 | 7.6 | 378 | 11.2 |
| Boldon Colliery | 62 | 55 | 155 | 6.6 | 50 | 2.4 | 205 | 4.7 |
| Cleadon and East Boldon | 15 | 17 | 36 | 1.6 | 25 | 1.3 | 61 | 1.5 |
| Cleadon Park | 54 | 38 | 178 | 10.8 | 66 | 4.7 | 244 | 8.0 |
| Fellgate and Hedworth | 68 | 55 | 155 | 7.5 | 57 | 3.2 | 212 | 5.5 |
| Harton | 51 | 55 | 164 | 8.2 | 62 | 3.9 | 226 | 6.3 |
| Hebburn North | 74 | 60 | 200 | 9.7 | 71 | 4.0 | 271 | 7.1 |
| Hebburn South | 47 | 34 | 133 | 7.0 | 50 | 3.2 | 183 | 5.3 |
| Horsley Hill | 64 | 60 | 167 | 9.1 | 65 | 4.3 | 232 | 6.9 |
| Monkton | 86 | 69 | 188 | 9.2 | 76 | 4.3 | 264 | 7.0 |
| Primrose | 75 | 84 | 248 | 13.4 | 78 | 5.1 | 326 | 9.7 |
| Simonside and Rekendyke | 103 | 81 | 292 | 13.8 | 128 | 7.9 | 420 | 11.3 |
| Westoe | 40 | 44 | 138 | 5.9 | 46 | 2.4 | 184 | 4.3 |
| West Park | 53 | 53 | 133 | 6.1 | 62 | 3.4 | 195 | 4.8 |
| Whitburn and Marsden | 33 | 34 | 84 | 4.7 | 32 | 2.2 | 116 | 3.6 |
| Whiteleas | 59 | 60 | 193 | 9.7 | 67 | 4.3 | 260 | 7.3 |
| SOUTH TYNESIDE | 1,137 | 1,007 | 3,264 | 9.0 | 1,225 | 4.1 | 4,489 | 6.8 |

Source: Office for National Statistics, Tyne & Wear Research and Information

Notes: * Rates are the number of unemployed as a percentage of the estimated labour force (the economically active population), at 2001 Census © Crown Copyright

| October 2008 | | | | | | | | |
|------------------------|--------------|--------------|-----------------------|------------|--------------|------------|---------------|------------|
| Ward | FLOWS | | CLAIMANT UNEMPLOYMENT | | | | | |
| | onto regr | off regr | Male | %* | Female | %* | Total | %* |
| Barnes | 67 | 55 | 156 | 5.5 | 61 | 2.5 | 217 | 4.2 |
| Castle | 69 | 67 | 207 | 7.7 | 71 | 3.1 | 278 | 5.6 |
| Copt Hill | 61 | 53 | 150 | 5.3 | 40 | 1.7 | 190 | 3.7 |
| Doxford | 53 | 45 | 110 | 3.8 | 49 | 1.9 | 159 | 2.9 |
| Fulwell | 51 | 37 | 91 | 3.1 | 35 | 1.4 | 126 | 2.3 |
| Hendon | 154 | 140 | 545 | 20.8 | 128 | 6.1 | 673 | 14.2 |
| Hetton | 75 | 57 | 144 | 5.6 | 54 | 2.6 | 198 | 4.2 |
| Houghton | 62 | 51 | 140 | 5.3 | 38 | 1.7 | 178 | 3.6 |
| Millfield | 91 | 70 | 254 | 9.6 | 87 | 3.9 | 341 | 7.0 |
| Pallion | 111 | 90 | 284 | 11.4 | 83 | 3.8 | 367 | 7.9 |
| Redhill | 108 | 85 | 298 | 11.6 | 105 | 4.9 | 403 | 8.5 |
| Ryhope | 62 | 49 | 171 | 7.3 | 58 | 2.8 | 229 | 5.2 |
| St Anne's | 94 | 96 | 250 | 11.0 | 88 | 4.5 | 338 | 8.0 |
| St Chad's | 57 | 64 | 153 | 6.9 | 57 | 2.9 | 210 | 5.0 |
| St Michael's | 52 | 61 | 173 | 7.8 | 46 | 2.5 | 219 | 5.4 |
| St Peter's | 68 | 73 | 187 | 6.6 | 65 | 2.8 | 252 | 4.9 |
| Sandhill | 89 | 64 | 272 | 11.4 | 86 | 4.3 | 358 | 8.2 |
| Shiney Row | 73 | 53 | 152 | 5.0 | 56 | 2.2 | 208 | 3.7 |
| Silksworth | 88 | 73 | 210 | 8.2 | 69 | 2.9 | 279 | 5.7 |
| Southwick | 97 | 73 | 268 | 11.1 | 99 | 4.8 | 367 | 8.2 |
| Washington Central | 61 | 62 | 128 | 4.0 | 64 | 2.3 | 192 | 3.2 |
| Washington East | 55 | 51 | 129 | 4.2 | 50 | 1.9 | 179 | 3.2 |
| Washington North | 77 | 90 | 229 | 7.8 | 90 | 3.6 | 319 | 5.9 |
| Washington South | 51 | 51 | 110 | 3.4 | 56 | 2.0 | 166 | 2.8 |
| Washington West | 64 | 65 | 128 | 4.1 | 56 | 2.1 | 184 | 3.2 |
| SUNDERLAND | 1,890 | 1,675 | 4,939 | 7.3 | 1,691 | 2.9 | 6,630 | 5.3 |
| TYNE & WEAR | 7,059 | 6,263 | 19,157 | 7.5 | 6,502 | 2.9 | 25,659 | 5.4 |

Source: Office for National Statistics, Tyne & Wear Research and Information

Notes: * Rates are the number of unemployed as a percentage of the estimated labour force (the economically active population), at 2001 Census © Crown Copyright