

EU08/04

## Unemployment in Tyne & Wear: March 2008

Published: April 2008

### In Tyne & Wear in March 2008 the main features were:

- 23,306 people, 4.9% of the labour force, claimed unemployment benefits (Table 2).
- Claimant unemployment count statistics for current (2004) wards are provided in Appendix 1.
- In the month to March, **the unadjusted claimant count fell in Tyne & Wear (-212, -0.9%), regionally fell by -0.9%, and in the UK by 0.7%** (Table 2). The claimant count rose only in Gateshead (92, 2.6%), with the claimant count falling in Newcastle (-150 -2.5%), North Tyneside (-46 -1.2%), South Tyneside (-38 -0.9%) and Sunderland (-70 -1.2%).
- **The claimant count, compared to a year ago, is lower locally, regionally and in the UK.** Compared to a year ago, the claimant count is -5.0% (-1,214) lower in Tyne & Wear, -5.4% lower in the North East and -11.8% lower in the UK. At Tyne & Wear district level, the claimant count is lower in all five districts. The fastest fall was in Newcastle (-480, -7.7%) and the slowest in North Tyneside (-125, -3.3%) and Sunderland (-252, -4.0%) (Table 2).
- **The North East seasonally adjusted claimant count rose 300 to 47,900 in March, down 3,000 over the year** (Table 1). The North East has the highest regional rate in the UK (3.9%). The South East and South West have the lowest regional rate (1.4%). The claimant count rate remained stable in all Government Office Regions in the month to March. (All seasonally adjusted).
- **The UK seasonally adjusted claimant count fell during March.** The number of people out of work and claiming benefit fell by -1,200 (-0.2%). Compared to a year ago, the UK seasonally adjusted claimant count is -111,400 lower (down -12.3%). The UK seasonally adjusted claimant count rate is 2.5% (Table 1). *Note: seasonally adjusted claimant count data in this broadsheet are provisional and are revised by ONS the following month.*

### Labour Force Survey (LFS) Estimates

Labour Force Survey (LFS) estimates, particularly for the North East and Tyne & Wear, are subject to sampling variability\*. The following therefore gives the *probable* direction of change. Over the year to February 2008, in the North East the LFS [still] indicates that the trend in the employment rate is down, -0.2 pp on the year at 71.0%. The North East unemployment rate in the quarter to February 2008 at 6.0%, up 0.1pp on a year earlier [ Not a significant difference].

In the UK the LFS shows an increase in the number of people in employment (up by 152,000 over the quarter to February) and the employment rate (74.9%) is also increasing. The number of workforce jobs in the UK was up in December 2007 by 208,000 on a year earlier. (The sector with the largest annual increase was [still] Finance & Business Services but, up a much slower 149,000). The UK unemployment rate in the 3 months to February 2008 was 5.2%, down 0.4 percentage points from a year earlier. This is not significantly different from a year ago.

(\*95% of estimates of UK rates will be within +/-0.2 percentage points of the actual unemployment rate and in the North East +/-1.3 percentage points of the actual rate).

12-month averages from the Annual Population Survey (APS) give more robust unemployment rates. **In Tyne & Wear for the 12 months to March 2007, estimated ILO unemployment of 36,600 or 7.4% (unadjusted)** (Table 5).

**CLAIMANT COUNT UNEMPLOYMENT**

The claimant count reports numbers qualifying for benefits as a result of unemployment and is subject to the associated administrative system.

**Table 1: Change in Total Claimant Count: Seasonally Adjusted\*: March 2008**

(Workforce rates) <sup>#</sup>	Total	Rate %	Change since previous:			
			Month	%	Year	%
<b>North East Region</b>	47,900	3.9 (w)	300	0.6	-3,000	-5.9
<b>Great Britain</b>	770,400	2.4 (w)	-1,200	-0.2	-109,600	-12.5
<b>United Kingdom</b>	794,300	2.5 (w)	-1,200	-0.2	-111,400	-12.3

Source: Office for National Statistics

Notes: \* The seasonally adjusted series takes account of previous changes which have affected the unemployment count so that the whole series over time is consistent with current figures. Seasonally adjusted figures are not available below regional level. Claimants aged under 18 are excluded. Figures in this table are provisional.

# The national and regional claimant count rates in Table 1 are the number of unemployed as a percentage of the estimated total workforce (the sum of unemployed claimants, employees in employment, self-employed, HM Forces and participants on work-related government training programmes), at mid-2006.

In January 2003, the Office for National Statistics (ONS) withdrew workforce-based claimant count rates for sub-regional areas, however, they remain available for regions and countries. The workforce-based rates, below regions, were replaced with a new residence-based measure. The claimant count, as a 'proportion' of the resident population of working age (PWA is females 16-59, males 16-64), are given in Table 3 and are named 'claimant count proportions'. TWRI's residence-based rates (which use the economically active as the denominator) are given in Table 2 (overleaf).

**Table 2: National, Regional and Local Claimant Count\* and Change, Unadjusted: March 2008**

	Male	Rate%	Female	Rate%	Total	Rate%	Change since previous month:		Change since previous year:	
							Number	%	Number	%
<b>Gateshead</b>	2,725	6.0 R	915	2.3 R	3,640	4.3 R	92	2.6	-150	-4.0
<b>Newcastle</b>	4,511	7.5 R	1,250	2.4 R	5,761	5.2 R	-150	-2.5	-480	-7.7
<b>North Tyneside</b>	2,814	5.9 R	862	2.1 R	3,676	4.1 R	-46	-1.2	-125	-3.3
<b>South Tyneside</b>	3,168	8.7 R	1,075	3.6 R	4,243	6.4 R	-38	-0.9	-207	-4.7
<b>Sunderland</b>	4,480	6.6 R	1,506	2.6 R	5,986	4.8 R	-70	-1.2	-252	-4.0
<b>Tyne &amp; Wear</b>	17,698	6.9 R	5,608	2.5 R	23,306	4.9 R	-212	-0.9	-1,214	-5.0
<b>North East</b>	38,435	5.8 W	12,475	2.2 W	50,910	4.1 W	-454	-0.9	-2,914	-5.4
<b>Great Britain</b>	599,421	3.5 W	218,874	1.5 W	818,295	2.6 W	-6,003	-0.7	-111,799	-12.0
<b>United Kingdom</b>	618,655	3.6 W	224,172	2.2 W	842,827	2.6 W	-6,112	-0.7	-113,195	-11.8

Source: Office for National Statistics, Tyne & Wear Research and Information

Notes: \* Count of claimants of Jobseekers' Allowance

*R = Residence-based. District and county claimant count rates are the number of unemployed now as a percentage of the estimates labour force (the economically active population), at 2001 Census © Crown Copyright.*

*W = Workforce-based. National and claimant count rates are the number of unemployed as a percentage of the estimated total workforce (the sum of unemployed claimants, employees in employment, self-employed, HM Forces and participants on work-related government training programmes), at mid-2006.*

*Caution: District and Tyne & Wear numbers in Table 2 are calculated using current (2004) wards. These numbers may vary slightly from figures extracted direct from NOMISWEB, which are based on 1991 wards and are no longer in complete alignment with current Tyne & Wear boundaries.*

**Table 3: National, Regional and Local Claimant Count\*, Unadjusted: March 2008**

(Resident PWA-based proportions)

	Male	Percentage of population #	Female	Percentage of population #	Total	Percentage of population #
<b>Gateshead</b>	2,725	4.6	915	1.6	3,640	3.1
<b>Newcastle</b>	4,511	5.2	1,250	1.5	5,761	3.4
<b>North Tyneside</b>	2,814	4.8	862	1.5	3,676	3.2
<b>South Tyneside</b>	3,168	6.8	1,075	2.5	4,243	4.7
<b>Sunderland</b>	4,480	4.9	1,506	1.8	5,986	3.4
<b>Tyne &amp; Wear</b>	17,698	5.2	5,608	1.7	23,306	3.5
<b>North East Region</b>	38,435	4.7	12,475	1.6	50,910	3.2
<b>Great Britain</b>	599,421	3.1	218,874	1.2	818,295	2.2
<b>United Kingdom</b>	618,655	3.2	224,172	1.2	842,827	2.2

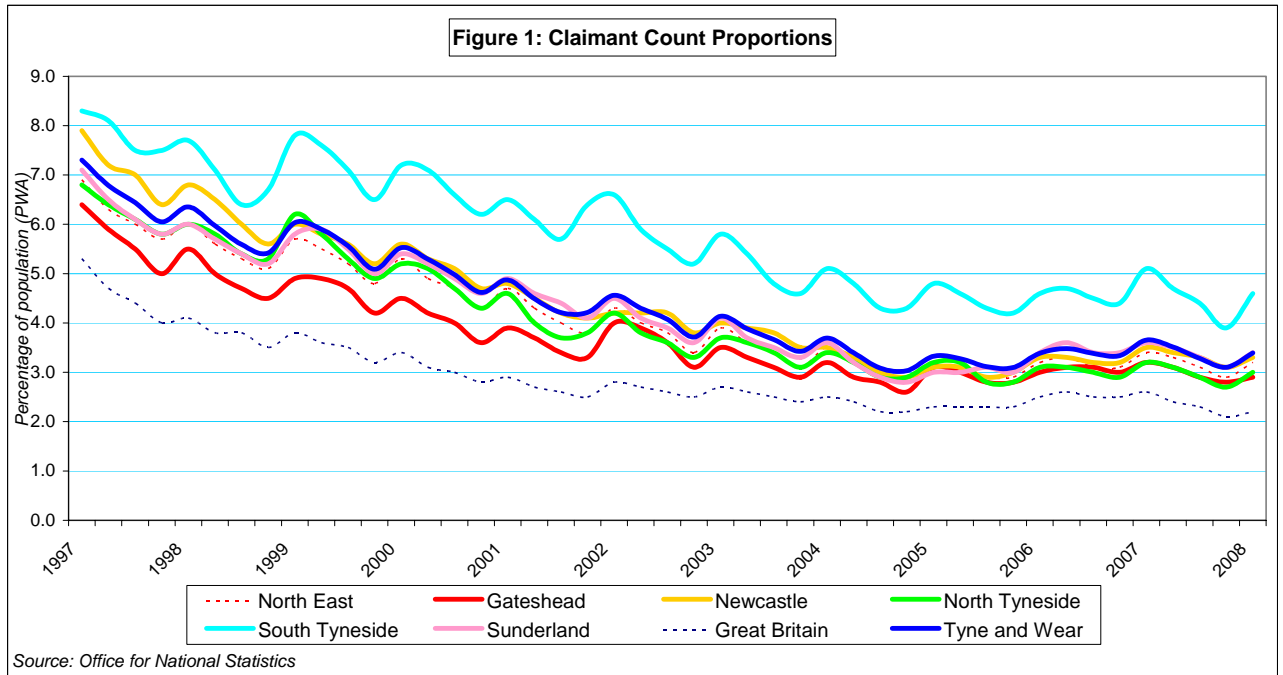
Source: Office for National Statistics, Tyne &amp; Wear Research and Information

Notes: \* Count of claimants of Jobseekers' Allowance

District and Tyne & Wear numbers in Table 3 are calculated using current (2004) wards. These numbers may vary slightly from figures extracted direct from NOMISWEB, which are based on 1991 wards.

# Claimant count figures given in Table 3 are expressed as a proportion of the resident population of working age (females 16-59, males 16-64). In order to ensure consistency with District and Tyne & Wear boundaries, the population of working age (PWA) figures are derived from the mid-2001 population estimates (sum of CAS wards population of working age figures).

The percentage figures in Table 3 are referred to as 'proportions' to distinguish them from the workforce-based rates, which are available at region/country level. On average, the 'proportions' are around a fifth smaller than the workforce rates, due to the wider denominators.



*Notes:* Claimant count proportions (residence-based proportions of Population of Working Age) are given for January, April, July and October.

*Caution:* Not seasonally adjusted, so shows seasonal rises normally in January.

**Table 4: National, Regional and Local Benefit Claimants: May 2007**

	Incapacity/Severe Disablement Allowance*						Benefit Claimants - working age client group**					
	Male	% of PWA #	Female	% of PWA #	Total	% of PWA #	Male	% of PWA #	Female	% of PWA #	Total	% of PWA #
<b>Gateshead</b>	5,300	8.9	3,100	5.5	8,400	7.3	11,600	19.4	9,500	17.0	21,100	18.2
<b>Newcastle</b>	5,400	6.2	3,600	4.4	9,000	5.4	15,500	17.9	13,400	16.5	28,800	17.2
<b>North Tyneside</b>	4,200	7.1	2,800	4.9	7,100	6.1	10,900	18.4	8,800	15.6	19,700	17.0
<b>South Tyneside</b>	4,100	8.8	2,000	4.6	6,100	6.7	9,800	21.0	8,300	19.0	18,000	19.9
<b>Sunderland</b>	8,100	8.9	5,000	5.8	13,100	7.4	17,800	19.6	15,400	18.0	33,200	18.8
<b>Tyne &amp; Wear</b>	27,100	7.9	16,600	5.1	43,700	6.6	65,500	19.1	55,400	17.1	120,900	18.2
<b>North East Region</b>	63,600	7.7	38,900	5.1	102,500	6.5	147,200	17.9	126,500	16.6	273,700	17.3
<b>Great Britain</b>	944,000	5.0	622,600	3.5	1,566,800	4.3	2,461,400	12.9	2,282,400	13.0	4,743,800	13.0

Source: Department for Work and Pensions

Notes: Benefits claimants counts are rounded to the nearest 100 and are subject to sampling variability.

Data relate to a single point in time and provide a snapshot of claims at that point. Data are not seasonally adjusted.

\* Count of those in receipt of Incapacity Benefit or Severe Disablement Allowance, aged 16-64, for all durations.

\*\* Benefit claimants – working age client group includes benefit claimants aged 16-64 years, on Income Support (IS) only, Job Seekers Allowance (JSA) only, Incapacity Benefit (IB) only, IS and IB, DLA and IB, DLA, IS and IB, Disability Living Allowance (DLA) only, DLA, IS and SDA, DLA and IS, DLA and SDA, IS and SDA, Severe Disablement Allowance (SDA) only, DLA and JSA, other combinations. Data includes all durations and all family types.

# Benefit claimant count figures given in Table 4 are expressed as a proportion of the resident population of working age (females 16-59, males 16-64). In order to ensure consistency with District and Tyne & Wear boundaries, the population of working age (PWA) figures are derived from the mid-2001 population estimates (sum of CAS wards population of working age figures).

## INTERNATIONAL LABOUR ORGANISATION (ILO) MEASURE OF UNEMPLOYMENT

The ILO definition of unemployment, refers to people “without a job who were available to start work in the two weeks following their LFS interview and had looked for work in the four weeks prior to interview (or were waiting to take up a job they had already obtained)”. This has been the official, government, definition of unemployment since 1998.

**Table 5: National, Regional and Local ILO Unemployment, Unadjusted: 12 months Apr 2006-Mar 2007**

	Male	%	Confidence*	Female	%	Confidence*	Total	%	Confidence*
<b>Gateshead</b>	3,200	6.6	2.3	1,800	4.4	2.0	4,900	5.6	1.6
<b>Newcastle</b>	5,800	8.6	2.6	3,700	6.7	2.4	9,400	7.8	1.8
<b>North Tyneside</b>	4,100	8.4	2.7	2,400	5.2	2.2	6,500	6.9	1.7
<b>South Tyneside</b>	4,600	12.7	3.2	2,400	8.0	2.7	7,000	10.6	2.1
<b>Sunderland</b>	5,000	7.6	2.6	3,700	6.4	2.5	8,800	7.0	1.8
<b>Tyne &amp; Wear</b>	22,700	8.5	1.2	13,900	6.1	1.1	36,600	7.4	0.8
<b>North East Region</b>	48,000	7.7	0.7	30,000	5.6	0.7	77,900	6.7	0.5
<b>Great Britain</b>	882,400	5.8	0.1	638,300	5	0.2	1,520,700	5.4	0.1

Source: Annual Population Survey, Office for National Statistics.

Notes: Unemployment data from the Annual Population Survey (APS), covering a year's data.

The unemployment rate is the number of unemployed people aged 16 to 59/64 expressed as a percentage of the economically active population aged 16 to 59/64.

\*Data are presented with an indication of their reliability, in the form of approximate 95% confidence intervals. For example, an LFS estimate and confidence interval of 6.7% +/-0.7%, means the true rate would expect to lie between 6.0% and 7.4%. Only in exceptional circumstances would the true rate be outside the confidence interval. The narrower the confidence interval, the more reliable the estimate.

APS estimates are rounded to the nearest 100 by ONS. Formerly, ONS' LFS estimates were rounded to the nearest 1,000. The annual Labour Force Survey (LFS) is now incorporated into the Annual Population Survey (APS). Data are published quarterly with each publication covering a year's data. LFS - quarterly: four quarter averages are no longer updated.

## Appendix 1: Claimant Count Statistics Current (2004) Wards

Ward	FLOWS		CLAIMANT UNEMPLOYMENT				Total	%*
	onto regr	off regr	Male	%*	Female	%*		
<b>March 2008</b>								
Birtley	50	32	82	4.1	27	1.5	109	2.9
Blaydon	51	48	147	6.2	60	2.9	207	4.7
Bridges	75	74	214	12.9	61	5.0	275	9.6
Chopwell and Rowlands Gill	38	36	115	5.4	39	2.1	154	3.9
Chowdene	39	30	104	5.2	29	1.7	133	3.5
Crawcrook and Greenside	20	16	72	3.1	24	1.2	96	2.2
Deckham	64	59	176	8.5	49	2.8	225	5.9
Dunston and Teams	78	78	247	14.0	65	4.4	312	9.6
Dunston Hill and Whickham East	18	26	74	3.3	23	1.2	97	2.3
Felling	68	53	204	11.7	93	6.2	297	9.2
High Fell	56	55	166	8.9	49	2.9	215	6.1
Lamesley	40	31	87	4.6	40	2.5	127	3.6
Lobley Hill and Bensham	61	45	162	7.3	57	2.9	219	5.3
Low Fell	16	20	50	2.1	14	0.7	64	1.4
Pelaw and Heworth	27	33	108	5.6	34	2.0	142	3.9
Ryton, Crookhill and Stella	14	29	74	3.6	28	1.5	102	2.6
Saltwell	63	56	178	8.4	56	3.2	234	6.1
Wardley and Leam Lane	32	31	88	4.3	42	2.4	130	3.4
Whickham North	35	28	109	5.7	33	2.0	142	4.0
Whickham South and Sunnyside	17	15	58	2.4	23	1.1	81	1.8
Windy Nook and Whitehills	39	29	134	5.9	38	1.9	172	4.1
Winlaton and High Spen	24	20	76	3.7	31	1.8	107	2.8
<b>GATESHEAD</b>	<b>925</b>	<b>844</b>	<b>2,725</b>	<b>6.0</b>	<b>915</b>	<b>2.3</b>	<b>3,640</b>	<b>4.3</b>
Benwell and Scotswood	73	80	312	10.6	88	3.5	400	7.3
Blakelaw	46	48	233	9.6	60	2.8	293	6.4
Byker	99	105	363	15.2	122	6.3	485	11.2
Castle	25	18	56	2.0	22	0.9	78	1.5
Dene	13	13	47	1.9	12	0.5	59	1.2
Denton	54	49	162	6.8	39	1.8	201	4.5
East Gosforth	13	25	54	2.3	21	1.0	75	1.7
Elswick	98	101	474	19.6	115	7.1	589	14.5
Fawdon	52	51	196	8.9	47	2.4	243	5.8
Fenham	41	39	163	6.9	56	2.8	219	5.0
Kenton	59	68	228	10.1	62	3.1	290	6.9
Lemington	42	45	128	4.8	42	1.7	170	3.3
Newburn	34	34	140	6.4	42	2.1	182	4.4
North Heaton	24	31	74	3.1	24	1.1	98	2.2
North Jesmond	9	16	39	1.8	17	0.9	56	1.4
Ouseburn	62	49	195	10.3	40	2.5	235	6.8
Parklands	14	15	35	1.8	15	0.9	50	1.4
South Heaton	41	68	137	6.7	46	2.4	183	4.6
South Jesmond	12	19	69	3.4	15	0.8	84	2.2
Walker	111	112	437	20.0	106	6.1	543	13.9
Walkergate	53	56	178	7.6	49	2.5	227	5.3
Westerhope	19	22	56	2.3	16	0.7	72	1.6
Westgate	60	82	312	18.9	65	5.0	377	12.8
West Gosforth	18	18	45	1.8	13	0.6	58	1.2
Wingrove	44	55	197	8.6	64	3.5	261	6.3
Woosington	47	60	181	7.7	52	2.5	233	5.3
<b>NEWCASTLE</b>	<b>1,163</b>	<b>1,279</b>	<b>4,511</b>	<b>7.5</b>	<b>1,250</b>	<b>2.4</b>	<b>5,761</b>	<b>5.2</b>

Source: Office for National Statistics, Tyne & Wear Research and Information

Notes: \* Rates are the number of unemployed as a percentage of the estimated labour force (the economically active population), at 2001 Census © Crown Copyright

March 2008	FLOWS		CLAIMANT UNEMPLOYMENT					
	onto regr	off regr	Male	%*	Female	%*	Total	%*
Battle Hill	54	56	162	5.4	51	1.9	213	3.8
Benton	42	35	82	3.6	30	1.4	112	2.6
Camperdown	54	56	149	5.5	57	2.3	206	4.0
Chirton	91	105	342	13.6	75	3.5	417	8.9
Collingwood	55	45	163	6.4	41	1.9	204	4.3
Cullercoats	16	28	50	2.3	10	0.5	60	1.5
Howdon	73	74	273	11.6	83	4.4	356	8.4
Killingworth	25	40	95	3.7	31	1.4	126	2.6
Longbenton	58	60	175	9.0	41	2.4	216	5.9
Monkseaton North	19	24	43	1.8	17	0.8	60	1.3
Monkseaton South	14	31	59	2.6	28	1.3	87	2.0
Northumberland	32	44	101	4.5	28	1.4	129	3.0
Preston	26	30	59	2.6	27	1.3	86	2.0
Riverside	95	92	351	14.4	92	4.6	443	10.1
St Mary's	13	20	40	1.9	8	0.4	48	1.2
Tynemouth	39	31	114	4.4	43	1.9	157	3.3
Valley	40	40	108	5.3	40	2.3	148	3.9
Wallsend	72	66	239	9.1	83	3.6	322	6.5
Weetslade	35	21	86	3.6	29	1.4	115	2.6
Whitley Bay	44	35	123	5.0	48	2.2	171	3.7
<b>NORTH TYNESIDE</b>	<b>897</b>	<b>933</b>	<b>2,814</b>	<b>5.9</b>	<b>862</b>	<b>2.1</b>	<b>3,676</b>	<b>4.1</b>
Beacon and Bents	75	85	322	14.3	84	5.0	406	10.3
Bede	43	48	164	9.3	58	4.0	222	6.9
Biddick and All Saints	67	56	292	16.3	102	6.5	394	11.7
Boldon Colliery	41	53	143	6.0	53	2.6	196	4.5
Cleadon and East Boldon	9	19	29	1.3	18	0.9	47	1.1
Cleadon Park	41	46	161	9.8	66	4.7	227	7.4
Fellgate and Hedworth	51	47	141	6.9	50	2.8	191	5.0
Harton	42	39	168	8.4	55	3.5	223	6.2
Hebburn North	46	64	179	8.6	63	3.6	242	6.3
Hebburn South	40	41	125	6.6	41	2.6	166	4.8
Horsley Hill	47	41	150	8.1	57	3.8	207	6.2
Monkton	51	54	165	8.1	55	3.1	220	5.8
Primrose	65	69	241	13.0	75	4.9	316	9.4
Simonside and Rekendyke	80	77	305	14.4	100	6.2	405	10.9
Westoe	48	44	150	6.4	51	2.7	201	4.7
West Park	41	38	147	6.7	47	2.6	194	4.8
Whitburn and Marsden	36	32	90	5.0	37	2.5	127	3.9
Whiteleas	52	50	196	9.9	63	4.0	259	7.2
<b>SOUTH TYNESIDE</b>	<b>875</b>	<b>903</b>	<b>3,168</b>	<b>8.7</b>	<b>1,075</b>	<b>3.6</b>	<b>4,243</b>	<b>6.4</b>

Source: Office for National Statistics, Tyne & Wear Research and Information

Notes: \* Rates are the number of unemployed as a percentage of the estimated labour force (the economically active population), at 2001 Census © Crown Copyright

March 2008								
Ward	FLOWS		CLAIMANT UNEMPLOYMENT					
	onto regr	off regr	Male	%*	Female	%*	Total	%*
Barnes	43	52	127	4.5	46	1.9	173	3.3
Castle	62	57	190	7.1	56	2.5	246	5.0
Copt Hill	38	44	116	4.1	50	2.2	166	3.2
Doxford	36	36	107	3.7	30	1.2	137	2.5
Fulwell	31	29	74	2.5	22	0.9	96	1.8
Hendon	117	133	528	20.2	125	5.9	653	13.8
Hetton	48	55	109	4.2	39	1.8	148	3.2
Houghton	41	34	102	3.8	39	1.7	141	2.8
Millfield	57	69	214	8.1	60	2.7	274	5.6
Pallion	74	78	257	10.4	93	4.3	350	7.6
Redhill	93	92	259	10.1	98	4.6	357	7.6
Ryhope	37	37	147	6.3	67	3.3	214	4.9
St Anne's	66	58	258	11.4	84	4.3	342	8.1
St Chad's	38	41	142	6.4	49	2.5	191	4.6
St Michael's	42	43	154	6.9	52	2.8	206	5.1
St Peter's	59	57	178	6.3	61	2.6	239	4.6
Sandhill	63	69	250	10.5	86	4.3	336	7.7
Shiney Row	58	54	141	4.7	37	1.5	178	3.2
Silksworth	39	54	183	7.2	61	2.6	244	5.0
Southwick	74	82	261	10.8	89	4.3	350	7.8
Washington Central	48	53	119	3.7	43	1.6	162	2.7
Washington East	46	41	117	3.8	55	2.1	172	3.0
Washington North	75	66	228	7.8	75	3.0	303	5.6
Washington South	34	36	98	3.0	41	1.5	139	2.3
Washington West	44	47	121	3.9	48	1.8	169	2.9
<b>SUNDERLAND</b>	<b>1,363</b>	<b>1,417</b>	<b>4,480</b>	<b>6.6</b>	<b>1,506</b>	<b>2.6</b>	<b>5,986</b>	<b>4.8</b>
<b>TYNE &amp; WEAR</b>	<b>5,223</b>	<b>5,376</b>	<b>17,698</b>	<b>6.9</b>	<b>5,608</b>	<b>2.5</b>	<b>23,306</b>	<b>4.9</b>

Source: Office for National Statistics, Tyne & Wear Research and Information

Notes: \* Rates are the number of unemployed as a percentage of the estimated labour force (the economically active population), at 2001 Census © Crown Copyright